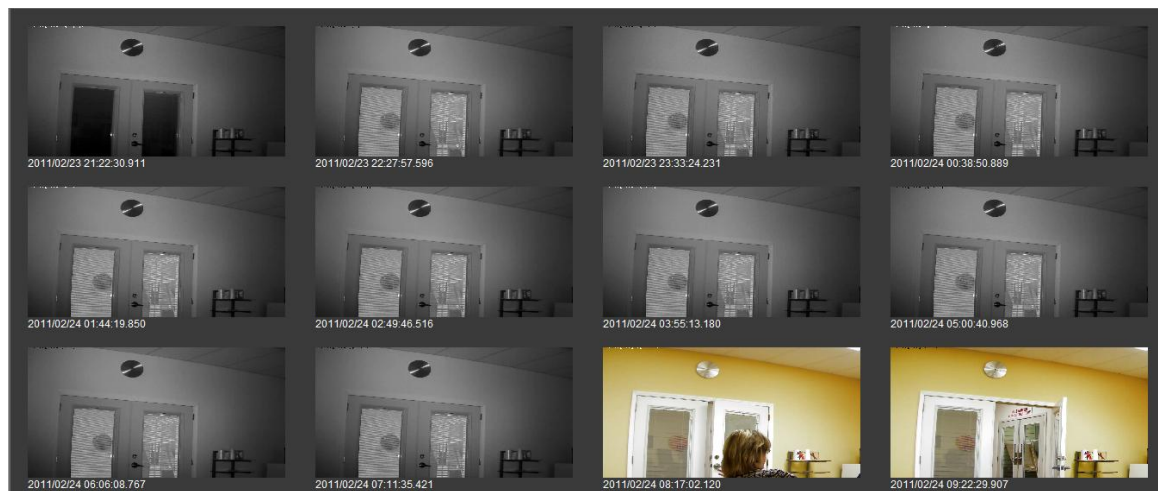


Key Benefits of Command Center

ArgusView

- ArgusView is an easy and efficient tool to display quick video snapshots of recorded video within a specified duration. “ArgusView by Time” significantly reduces the search time linked with large amounts of video footage. ArgusView facilitates swift search through sizeable amounts of video while rendering video thumbnail displays of the timeline within a matter of seconds.

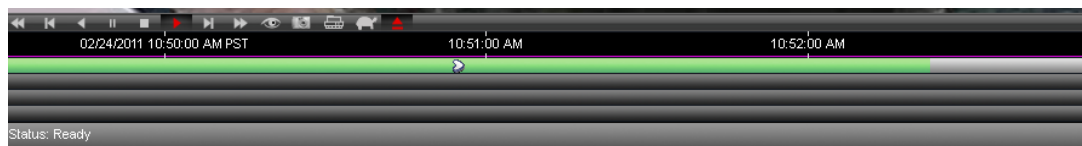


Playback Functionality

- Command Center supports up to 20 display windows with a combination of live and recorded video displayed simultaneously. There are different ways to manage and access recorded video
- Synchronous Playback: Capability to playback up to 9 recorded video stream simultaneously. The video streams can also come from different hDVR/NVR.
- Advanced Smart Search: The Advanced Smart Search functionality uses the video analytics technology to extract useful information from recorded video and detects events that humans are prone to neglect.
- Control Panel Playback: Quick playback can be accomplished using the control buttons on the panel in live or playback mode.



- Media Bar: The media bar not only allows for quick and efficient live and historical playback by double clicking on any point on the media bar, but also at the same time provides visual notifications of alarms.

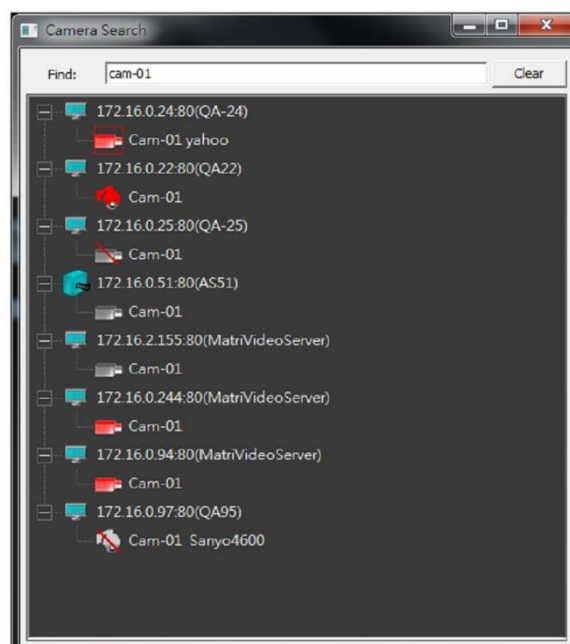
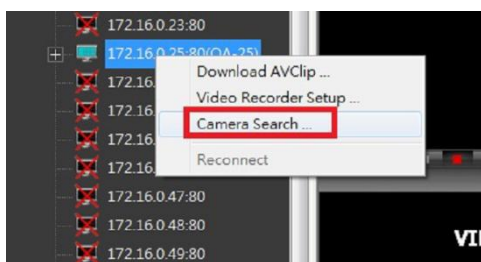


- Extended Control Panel Playback: This floating playback panel provides additional advanced playback functionality by pre-specified time slots or selectable calendar date/time.



Camera Search

- Camera search allows users to quickly locate a camera within a tree of possibly hundreds or thousands of cameras, for live viewing, camera pattern creation, and tree/map creation. Camera search can be initiated by either using CTRL+F or right clicking on the camera tree and selecting “Camera Search”.



Digital PTZ with Bird-Eye View

The Digital PTZ Functionality provides a non-PTZ camera with the functionality traditionally reserved for PTZ cameras, such as Digital Pan/Tilt and Zoom. This feature is extremely valuable if the application requires checking the image detail, especially for mega pixel cameras. Users can conveniently right click on the camera view to activate the “Digital PTZ” functionality. At the same time, the “Bird-Eye View” window will appear on the bottom left hand corner of the camera view, with a crosshair pointer within the window, to facilitate Digital PTZ Controls with the use of a mouse. The Bird-View window shows the entire camera view, and the yellow rectangular area comparatively illustrates the zoomed area of interest over the panoramic view.



Forensic Video Analytics

The Advanced Smart Search functionality uses the video analytics technology to extract useful information from recorded video and detects events that humans are prone to neglect.

Advanced Smart Search increases the effectiveness of post-event search time by filtering out undesired behavior and restricting the area of detection. Users can analyze recorded video from any camera within the MatriVideo system. Built-In Advanced Smart Search functionality is only available on Command Center in playback mode.

Features of Advanced Smart Search:

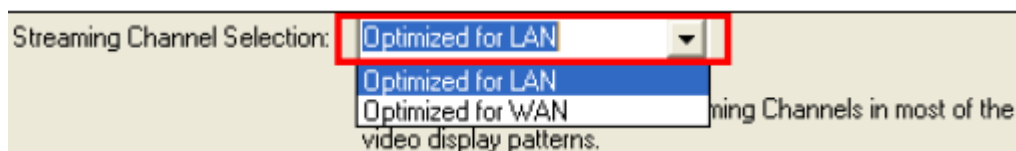
- ✓ Quick Motion Detection
- ✓ Intrusion Detection
- ✓ Crowd Density Measurement
- ✓ Object Left / Removal Detection



Bandwidth Monitoring & Control

Bandwidth monitoring and control is a quintessential aspect of any VMS application. Command Center provides different settings to effectively reduce or monitor streaming bandwidth.

- Streaming Channel Selection: This feature allows the users to decide if the cameras pre-resident on 2x2, 3x3 or 4x4 patterns should display the video in either main stream(highest resolution) or sub-stream (lower resolution). “Optimized for LAN” will always display the video in main stream and “Optimized for WAN” will conserve network bandwidth by always trying to display sub-stream.

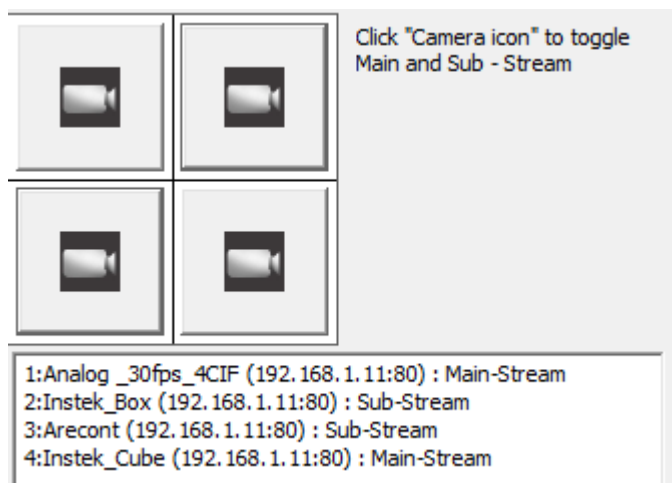


- Camera Preview: The camera preview feature displays the current bit rate information of each individual camera. The preview feature also allows the user to preview the “Image Quality” and set the “Quality Level” to a higher value or lower value. Increasing or decreasing this value not only improves or lowers the image quality but also increases or lowers the bit rate.



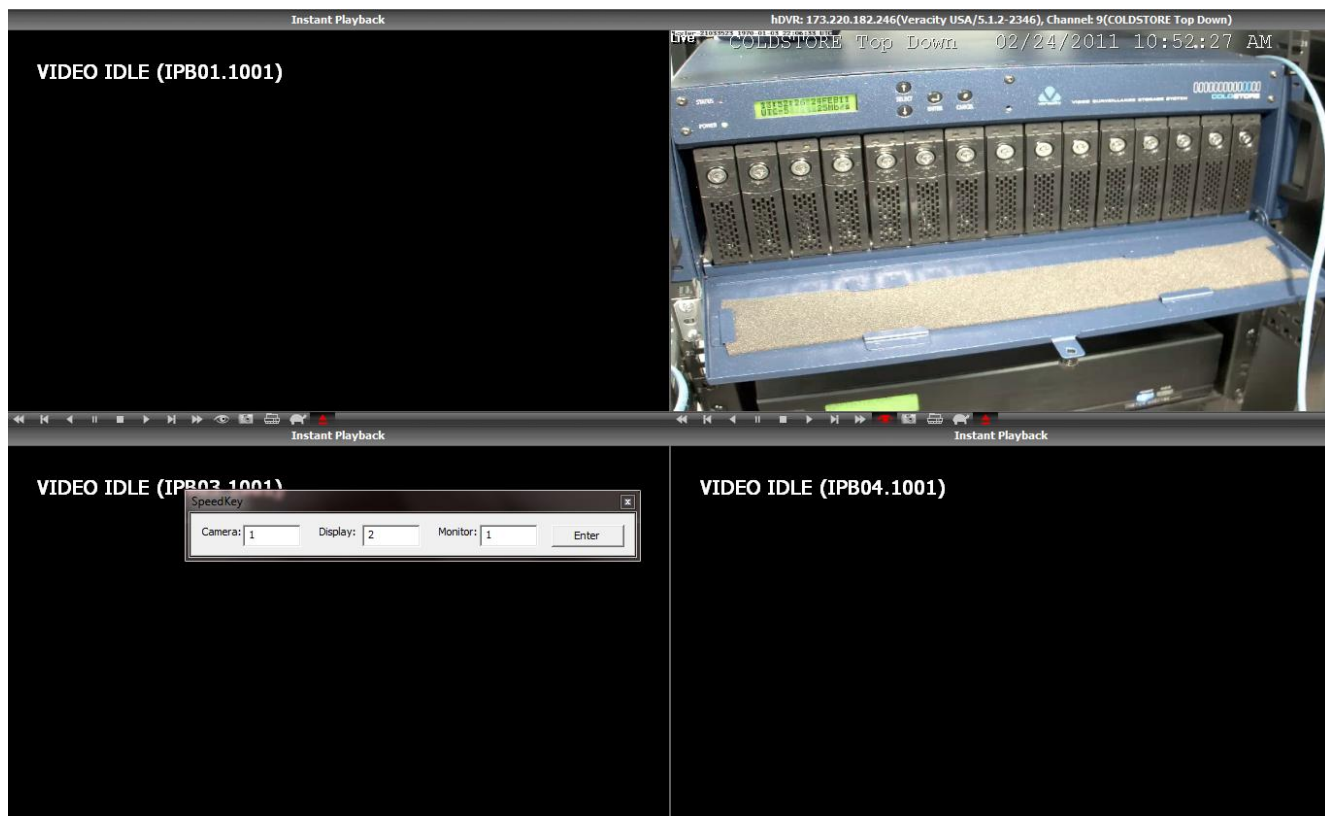
Continued.....

- Camera Patterns: The camera pattern layouts can be modified to toggle between displaying main-stream and sub-stream video (A low-resolution video stream supported by some cameras). Displaying the sub-stream can help improve video performance and reduce network bandwidth requirements.



Speed Key

The speed key functionality allows users to instantly view a camera video's stream in any particular display panel of Command Center by simply entering the camera's ID number, the number of the desired display panel and the desired monitor. The functionality is similar to using the "analog keyboard" in the "analog world" to easily and effectively pull up live video feeds.



Network CCTV Monitor Control

This functionality allows the users to control the network CCTV wall via the Command Center console. Feature such as viewing the camera feed on the network CCTV wall, changing th



.....6

e camera layouts, running camera tours or instant playback for recorded video search can be seamlessly accomplished via the use of the Command Center monitor pad. It provides an efficient and friendly control method for all users of the application.

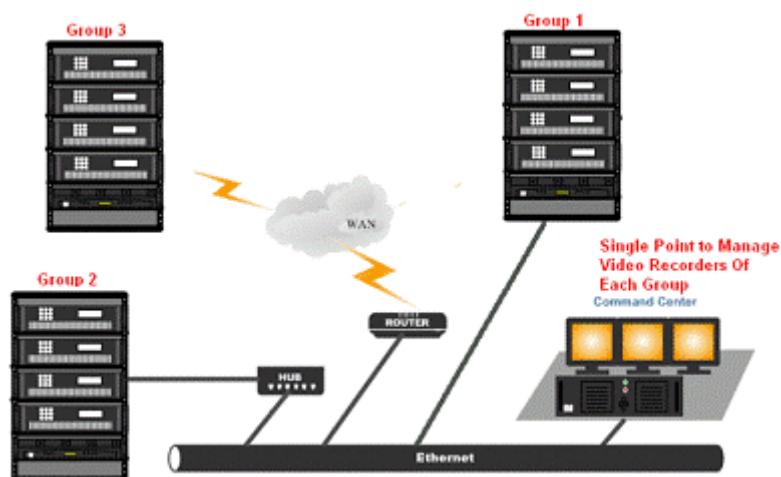
Step 1
Select the Monitor

Step 2
From the tree you can drag the camera icon and drop it in a cell of the display grid

shows the camera Image immediately.

User Account Authentication

User account authentication can be managed by a group or an individual. It provides a single entry to manage the authority rights of all video recorders simultaneously. User accounts created on one video recorder can easily be exported into other video recorders on the system. It provides maximum flexibility for account management.



Case Builder

Case Builder is an incident documentation and reporting tool. It allows the users to create a multimedia report and append it with supporting documentation such as video clips and image snapshots. This report can be filed and submitted as an “eyewitness” report of the incident. In mission critical applications such as Casinos and Transportation Facilities, when writing comprehensive reports is a daily protocol, Case Builder has become a very handy documentation tool.

**INCIDENT REPORT
ATTORNEY CLIENT PRIVILEGE
PRELIMINARY**

DATE: 31-08-07	DAY: THURSDAY	TIME: 1042 HOURS	SHIFT: 2
TYPE OF INCIDENT: EVICTION-REMANENT			
JOB DESCRIPTION: PATRON		NAME: BATTY LYLES	
LOCATION: MEMORIES GIFT SHOP		SUPERVISOR: N/A	
NOTIFIED: MISE, SGT. MCKENNA, MCGEE, MCDONALD			
OPERATORS: 117, 142, 115		BY: 117	
IR SHEET NUMBER(S): 4716			

NARRATIVE

ON THE ABOVE DATE AND TIME, SECURITY SHIFT SUPERVISOR CHENEY MCDOWELL NOTIFIED SURVEILLANCE OF A PATRON EVICTION IN THE SECURITY OFFICE. UPON GAINING COVERAGE, THE ABOVE PATRON WAS BEING ESCORTED INTO THE SECURITY INTERVIEW ROOM. WHILE INSIDE THE MOTORCITY MEMORIES GIFT SHOP FOR A ROUTINE SECURITY DETAIL, SECURITY PC OFFICER GLEN CHELDS ALLEGEDLY OBSERVED THE PATRON PLACE 3 SNICKERS CANDY BARS INSIDE THE POCKET OF HER COAT AND CONTINUED TO BROWSE INSIDE THE MOTORCITY MEMORIES UNTIL SHE WAS APPROACHED BY MOTORCITY MEMORIES GIFT SHOP SUPERVISOR CLAUDIA RILEY AND THE ABOVE SECURITY PC OFFICER. THE PATRON WAS ASKED TO REMOVE THE ITEMS FROM HER POCKET AND AFTER DOING, SO SHE WAS ASKED TO WAIT TO BE ESCORTED TO THE SECURITY OFFICE. WHILE INSIDE THE SECURITY OFFICE, THE PATRON WAS ADVISED THAT SHE WAS BEING PERMANENTLY EVICTED FOR ATTEMPTING TO STEAL FROM THE MOTORCITY MEMORIES GIFT SHOP. THE PATRON WAS THEN ESCORTED OFF OF CASINO PROPERTY WITHOUT FURTHER INCIDENT.

A SURVEILLANCE REVIEW PROVED THAT THE FOLLOWING EVENTS TOOK PLACE OCCURRED AT THE FOLLOWING APPROXIMATE HOURS:

DATE	START TIME	END TIME	DESCRIPTION	CAMERA	CLIP
31/12/09	1800	1800	BOOKMARK 1	0.0.0.1	CLIP01 CLIPV

N/A

DATE	TIME	DESCRIPTION	CAMERA	SNAPSHOT
31/12/09	1800	IMAGE 1	0.0.0.1	SNAPSHOT01 IMAGE
31/12/09	1800	IMAGE 2	0.0.0.1	SNAPSHOT02 IMAGE

